

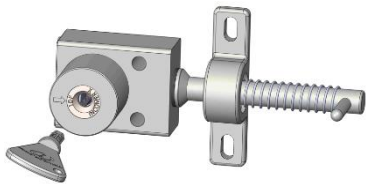
The SM is a single key access interlock ideal for use on hinged doors. The interlock has an open cavity design manufactured in either brass or stainless steel. Typical industries using the SM are food, chemical, pharmaceutical, mining, steel and power generation.

OPERATION

The SM access locks are used in various applications to control part body access to hazardous areas.

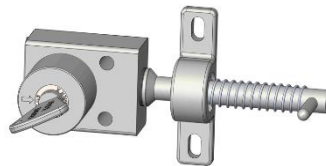
SM single key access interlock (bolt trapped – key free)

1 Key is free, bolt is trapped



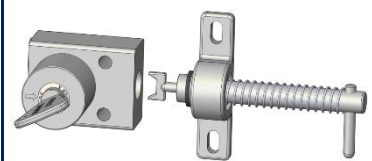
While the key is free, the bolt of the SM access lock is trapped in the mechanism. The door is locked.

2 Insert and turn key, then turn and release bolt



By inserting and turning the key in the SM access lock, the bolt is then free to be turned and released, which will trap the key in the lock.

3 Key is trapped, bolt is unlocked



The key stays trapped while the bolt is released and the door is open.

USAGE

The SM access lock should be used to allow safe access to potential hazardous and dangerous areas.

The SM access lock should be used on part body access doors where the use of personal safety key is not essential (to prevent accidental lock in).



The SM access lock is not designed for security purposes, such as access to a building.

No hazardous substances were used in the manufacture of this product. The product can be disposed of in standard waste.

INSTALLATION

The housing of the SM access interlock should normally be mounted on the static frame of the guard and the bolt to the sliding or hinged door using suitable fasteners. Fixed bolt bracket is highly tolerant to misaligned guards and should be fitted with suitable fasteners. Please refer to the drawing on page 4 for mounting details for the housing and bolt. Anti vibration pads should be used on machines that generate a high level of vibration.



IMPORTANT: The SM access Interlock should be mounted on the guard using anti-tamper fasteners to prevent unauthorised removal.



You must use M6 anti-tamper stainless steel screws secured using threadlock set to a torque of 5N/M.



Alignment limits of 0.5mm must be set in all planes. Angular displacement +/- 1° between lock and bolt.



The SM access Interlock must be installed by a competent and qualified person who has read and understood these instructions. Please retain this document in your technical file.



The manufacturer should be consulted when use in a corrosive environment is planned.

MAINTENANCE

Periodic visual checks should be carried out by the site manager/safety officer.

Do not lubricate lock barrel with oil or grease, use WD40 or CRC5-56 if necessary.



The interlock must be inspected every 6 months. Safety checks should include ensuring the keys and lock bolt can only be removed in the correct safety operating conditions (see page 1).



In case of defects being detected please contact your nearest ARMADILLO Support Department for further actions. Please see Contact section for contact details.

TECHNICAL DATA

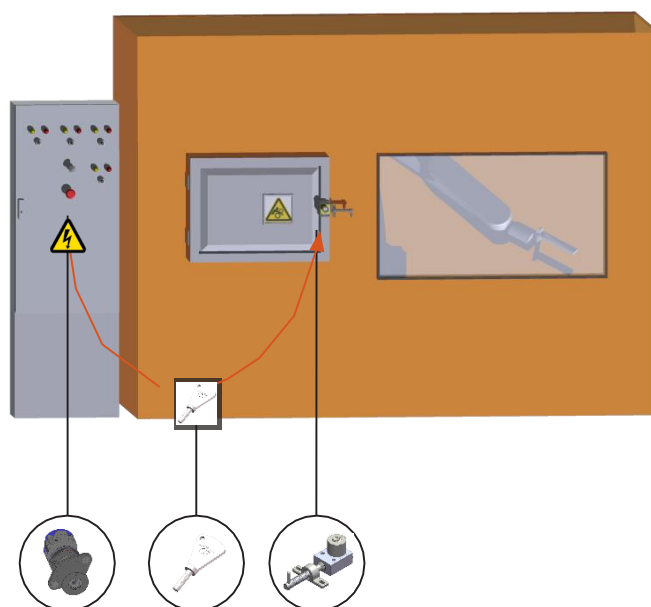
Temperature rating	-40°C [-40°F] to 140°C [284°F]
Type of mounting	Surface mount using suitable fasteners (please refer to drawing on page 4 for more details)
Weight	0.8 kg
Material	Brass/Stainless steel
B10d	1,250,000
Shock & vibration	EN 50155 & IEC 61373
Retention force	2.7 kN
PL rating	PLd

APPLICATION

A typical application of the SM access Interlock is machine guarding with part body access.

The SM safety component is used as part of an integrated safety system, which ensures a machine is shut down, before access to the hazardous area is allowed.

This system involves a SK key switch that breaks the machine safety circuit, when the key is removed. The key may then be inserted into the SM access Interlock to enable access to the machine. The machine cannot be restarted until the door is closed, the bolt is replaced and the key is then removed and returned to the SK key switch.

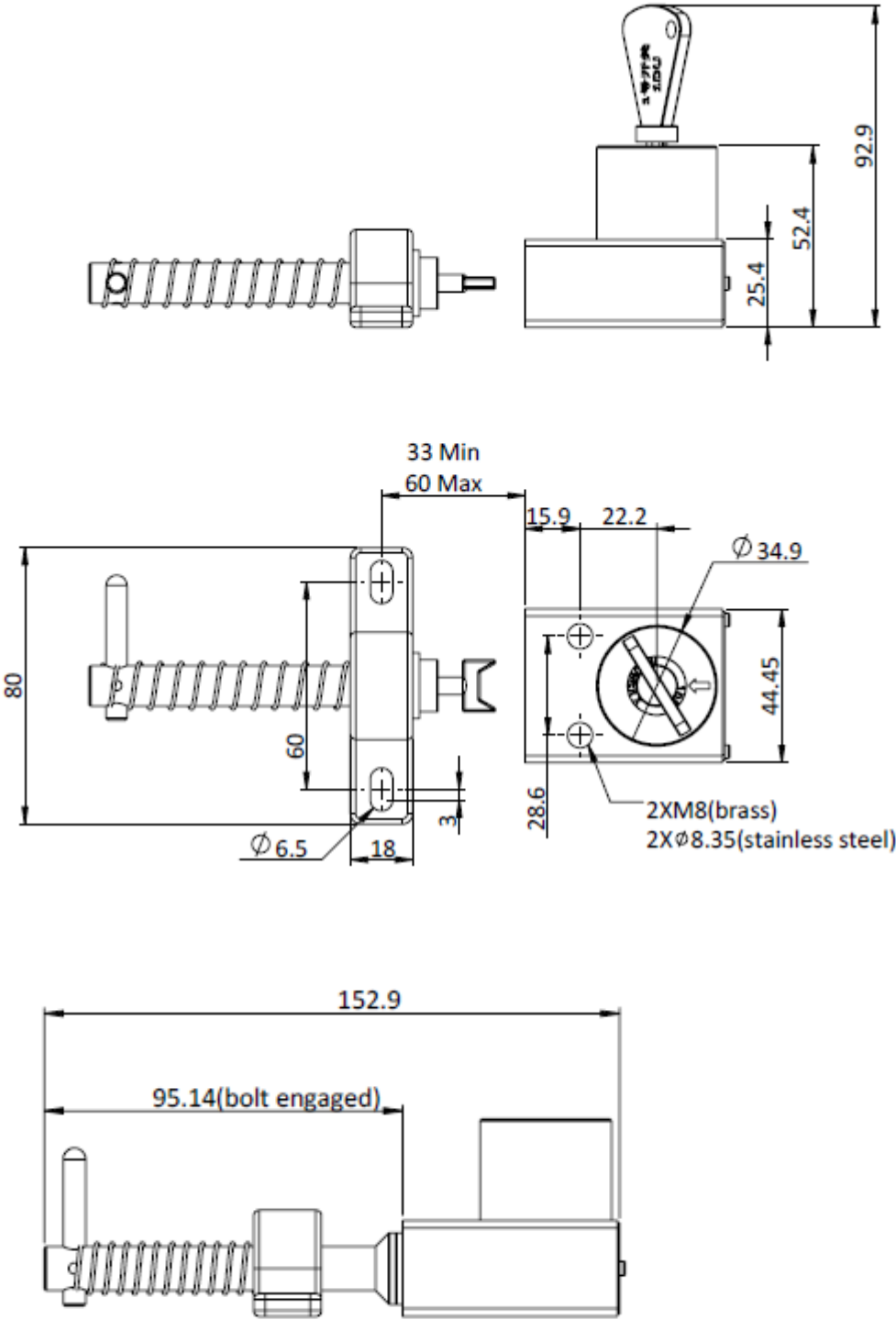


DRAWING

Dimensions: in mm

Note: For safe mounting, use security screws

SM, Key trapped bolt free




ORDER INFORMATION

	Component type		1	2
Part number	SM	-		
Example	SM	-	S	S

1	Material	S = Stainless steel B = Brass
2	Type of bolt	S = Latch bolt L = Chain bolt

Special construction available upon enquiry

ACCESSORIES

	Product	Part number
	Production cover	CAM12490(to be consulted to ARMADILLO)

CONTACT INFORMATION

WWW.ARMA-SAFETY.COM

Email: Sales@arma-safety.com

Phone: 0086(0)1531 680 2637

Address: No.2258 CaoAn Road JiaDing district Shanghai China