

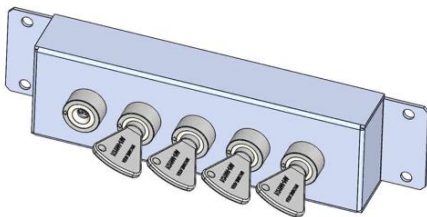
The key exchange box is designed to allow the release of secondary keys by trapping one or more initial keys. The need for this type of product usually arises where there is multiple access to a hazardous area. The key exchange box will be the link between the isolation locks and the access locks to the hazardous area.

OPERATION

The SJ key exchange boxes are used in various applications to control multi door access to hazardous areas.

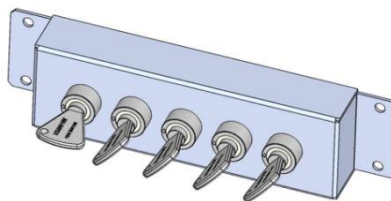
SJ KEY EXCHANGE BOX, sequenced key version

1 1 Key is free, 4 keys are trapped



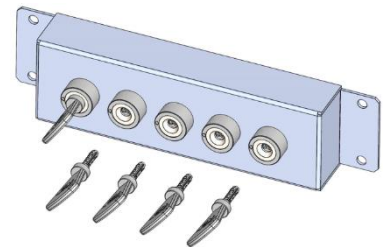
While 1 key is free which is usually used in a power isolation, 4 keys are trapped.

2 Insert and turn the free key, then turn and release the trapped keys in a sequence.



By inserting and turning the free key in the SJ key exchange box, trapped keys can be sequentially released. The released keys can be used in the access door locks to gain access to the hazardous area.

3 1 Key is trapped, 4 keys are released.



The inserted key stays trapped until all released keys are returned to their original position.

The SJ key exchange box is available in different combinations of free and trapped keys and also available in non-sequential released keys version.

USAGE

The SJ key exchange box should be used to allow safe access to potential hazardous and dangerous areas with one or more access point.



The SJ key exchange box is not designed for security purposes, such as access to a building.

No hazardous substances were used in the manufacture of this product. The product can be disposed of in standard waste.

INSTALLATION

The SJ KEY EXCHANGE BOX should normally be mounted on the static frame using suitable fasteners. Please refer to the drawing on page 4 for mounting distance and hole details.



IMPORTANT: The SJ KEY EXCHANGE BOX access Interlock should be mounted using anti-tamper fasteners to prevent unauthorized removal.



You must use M6 anti-tamper stainless steel screws secured using thread lock set to a torque of 5N/M.



The SJ KEY EXCHANGE BOX must be installed by a competent and qualified person who has read and understood these instructions. Please retain this document in your technical file.



The manufacturer should be consulted when use in a corrosive environment is planned.

MAINTENANCE

Periodic visual checks should be carried out by the site manager/safety officer.

Do not lubricate lock barrel with oil or grease, use WD40 if necessary.



The interlock must be inspected every 6 months. Safety checks should include ensuring the keys and lock bolt can only be removed in the correct safety operating conditions (see page 1).



In case of defects being detected please contact your nearest ARMADILLO Support Department for further actions. Please see Contact section for contact details.

TECHNICAL DATA

Temperature rating	-40°C [-40°F] to 140°C [284°F]
Type of mounting	Surface mount using suitable fasteners (please refer to drawing on page 4 for more details)
Weight	1 kg for 2 lock portions, add 0.5 kg per additional portion
Material	Brass/Stainless steel
B10d	2,500,000
Shock & vibration	EN 60068
PL rating	PLd

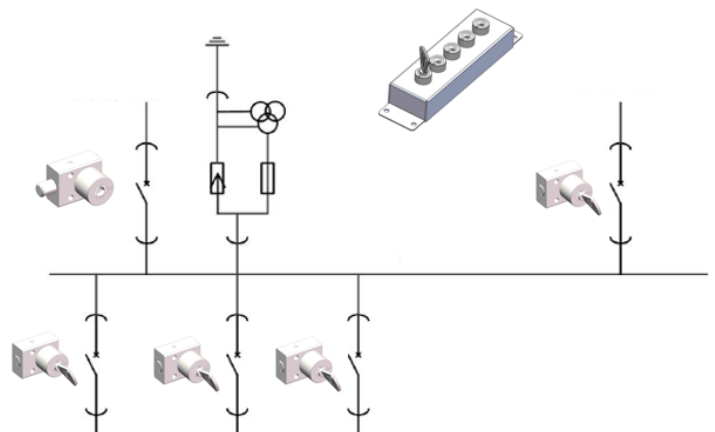
APPLICATION

A typical application of the SJ key exchange box is machine guarding with one or more access points to hazardous area.

The system includes a lock on the machine's power supply control device, an exchange box, and 3 access locks for entering the hazardous area. Under normal operation, the power key A is trapped in the electromechanical lock and the access door to the hazardous area is closed and locked.

To access the hazardous area:

1. The operator cuts the power to the machine allowing the release of the power key A.
2. The power key A is then trapped in the key exchange box, releasing the access keys B, C and D.
3. Access keys B, C and D can then be trapped in the access locks, each releasing a personal key and a bolt allowing access to the area. The personal keys B', C' and D' are kept by the operator during operation to protect against accidental locking and starting.
4. To put the machine back in service, the operator follows the same steps in reverse order.

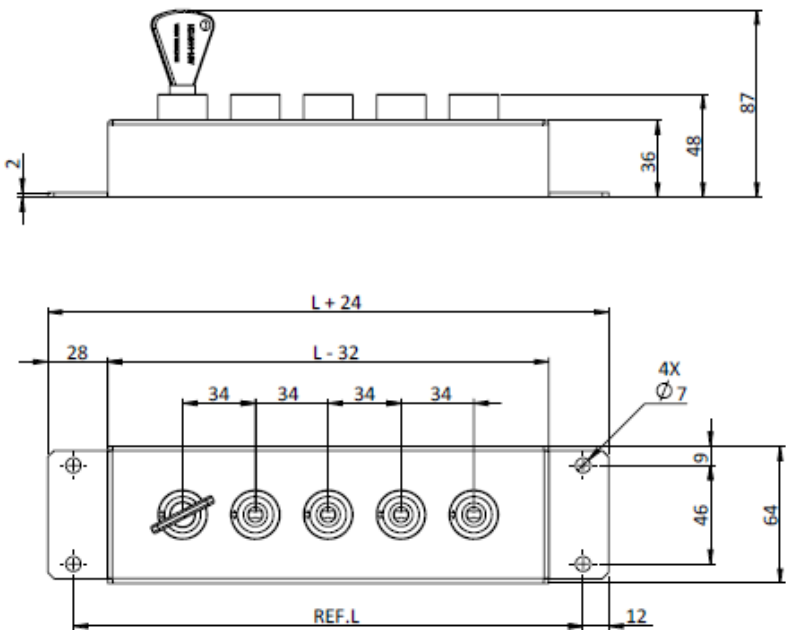


DRAWING

Dimensions: in mm

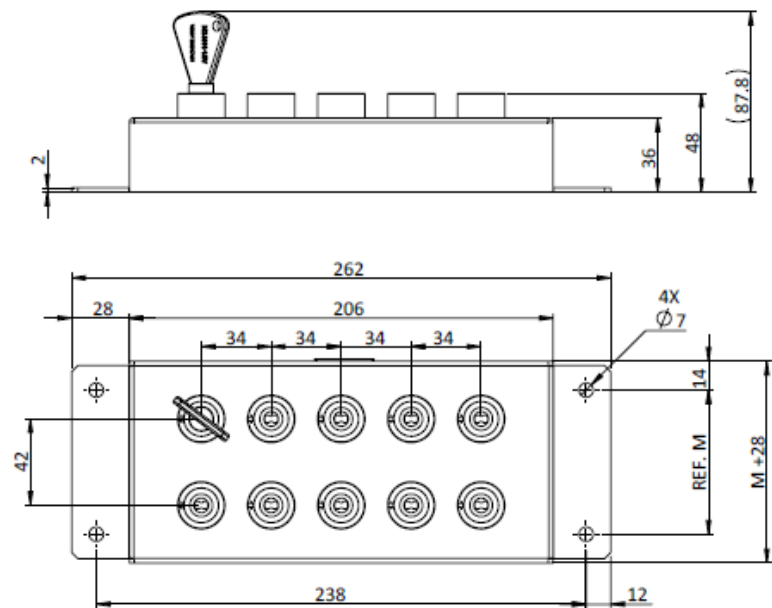
Note: For safe mounting, use security screws

SJ KEY EXCHANGE BOX, Single row, Key sequential released



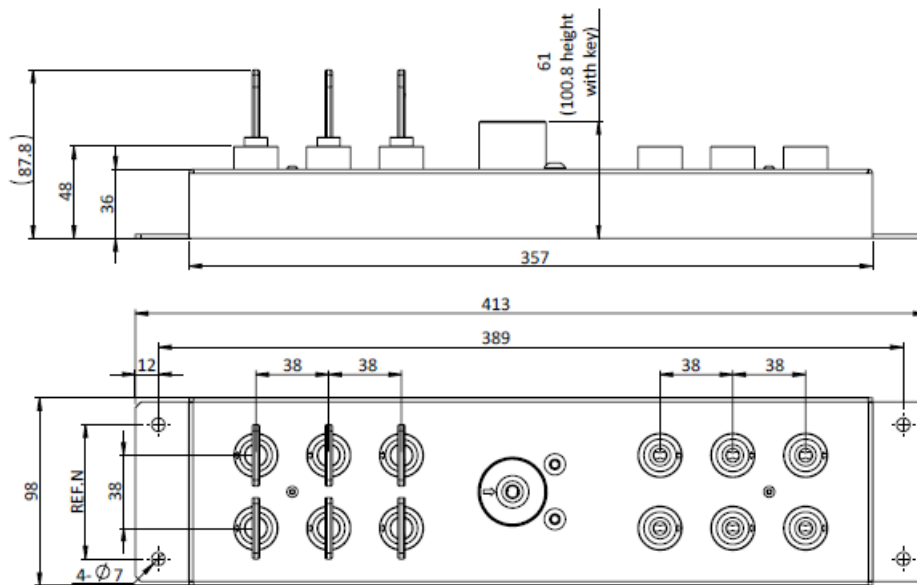
DIMENSION REFERENCE "L"	
NO. of KEYS	LENGTH
2 Keys	136mm
3 Keys	170mm
4 Keys	204mm
5 Keys	238mm
6 Keys	272mm
7 Keys	306mm
8 Keys	340mm
9 Keys	374mm
10 Keys	408mm
11 Keys	442mm
12 Keys	476mm
13 Keys	510mm
14 Keys	544mm
15 Keys	578mm
n Keys	68+34*n(mm)

SJ KEY EXCHANGE BOX, Multiple rows, Key sequential released

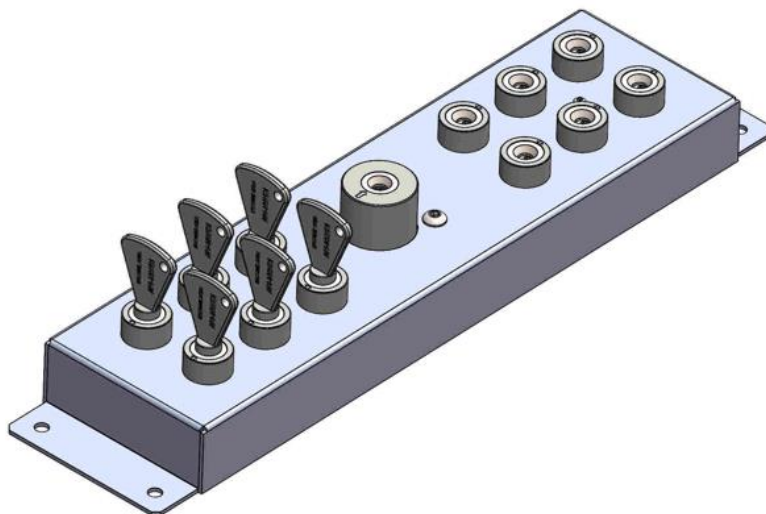


DIMENSION REFERENCE "M"	
NO. of KEYS	LENGTH
6~10 Keys	70mm
11~15 Keys	112mm
16~20 Keys	154mm
21~25 Keys	196mm
26~30 Keys	238mm

SJ KEY EXCHANGE BOX, Key non sequential released



DIMENSION REFERENCE "N"	
NO. of KEYS	LENGTH
1~6 Keys exchange to 1~7 keys	70mm
1~9 Keys exchange to 8~10 keys	108mm
1~12 Keys exchange to 11~13 keys	146mm
1~15 Keys exchange to 14~16 keys	184mm
1~18 Keys exchange to 17~19 keys	222mm




ORDER INFORMATION

	Component type				1	2	3	4
Part number	SJ	-		-		-		
Example	SJ	-	S	-	2/4	-	S	

1	Material	S = Stainless steel B = Brass
2	Exchange key quantity	n1/n2 = n1 trapped and n2 released 2/4 = 2 key trapped and 4 key released
3	Sequence of the key released	S = Sequential released key (standard product) R = Radom released key
4	Shape	X = One row (not applicable to random released key version) H = Multiple rows (see page 4 drawings)

Special construction available upon enquiry

ACCESSORIES

	Product	Part number
	Production cover	CAM12490(to be consulted to Armadillo)

CONTACT INFORMATION

WWW.ARMA-SAFETY.COM

Email: Sales@arma-safety.com

Phone: 0086(0)1531 680 2637

Address: No.2258 CaoAn Road JiaDing district Shanghai China