

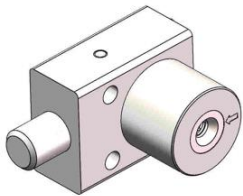
The SD lock is a key operated mechanical bolt interlock that is suitable for the control of electrical switchgear. The standard unit comes with a 16 mm diameter bolt available in various lengths, that is used to control the rotation or movement of operating handles or toggles of electrical switchgear. Many suppliers of switchgear equipment have mounting kits available for ARMADILLO interlocks. The lock is manufactured in brass or stainless steel.

OPERATION

The SD bolt lock range is used in switchgear control to inhibit movement of cams, toggles or levers.

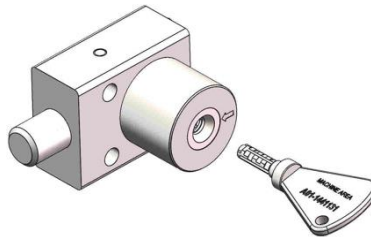
SD bolt lock

1 Key is free, bolt is extended



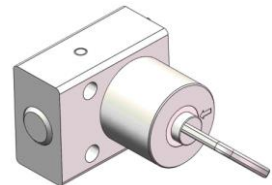
While the side bolt is extended, the key is free. The mechanism is locked.

2 Insert and turn key to drive bolt



By inserting and turning the key in the bolt interlock, you can retract the bolt, e. g., releasing the disconnect. This will trap the key into the lock.

3 Key is trapped, bolt is retracted



The key stays trapped while the bolt is retracted.

The length of the bolt is available in various lengths to suit the application, but the travel of the bolt is always 18,3 mm. The key is free when the bolt is extended. Insertion and rotation clockwise of the key will retract the bolt. The key will be trapped in the bolt retracted position.

USAGE

The SD bolts are used as a part of a safety system to allow safe control of valves or switches.



The SD bolt lock is not designed for security purposes, such as access to a building.

No hazardous substances were used in the manufacture of this product. The product can be disposed of in standard waste.

INSTALLATION

The housing of the SD bolt lock should normally be mounted to a panel using suitable fasteners. Please refer to drawing on page 4 for more installation details.



IMPORTANT: The SD bolt lock should be mounted using anti-tamper fasteners to prevent unauthorized removal.



You must use M8 anti-tamper stainless steel screws secured using threadlock set to a torque of 13 N/M.



Force required to shear lock bolt is 30 KN for stainless steel and 19 KN for brass interlocks.



The SD bolt lock must be installed by a competent and qualified person who has read and understood these instructions. Please retain this document in your technical file.



The manufacturer should be consulted when use in a corrosive environment is planned.

MAINTENANCE

Periodic visual checks should be carried out by the site manager/safety officer.

Do not lubricate lock barrel with oil or grease, use WD40 or CRC5-56 if necessary.



The interlock must be inspected every 6 months. Safety checks should include ensuring the keys and lock bolt can only be removed in the correct safety operating conditions (see page 1).



In case of defects being detected please contact your nearest ARMADILLO Support Department for further actions. Please see Contact section for contact details.

TECHNICAL DATA

Temperature rating	-40°C [-40°F] to 140°C [284°F]
Type of mounting	Surface mount using suitable fasteners (please refer to drawing on page 4 for more details)
Weight	0.7 kg
Material	Brass/Stainless steel
B10d	2,000,000
Shock & vibration	EN 60068
PL rating	PLd

APPLICATION

The SD bolt interlock safety component is used as a part of an integrated safety system.

While power supply to the system is switched on, the access doors to the hazardous area are locked closed.

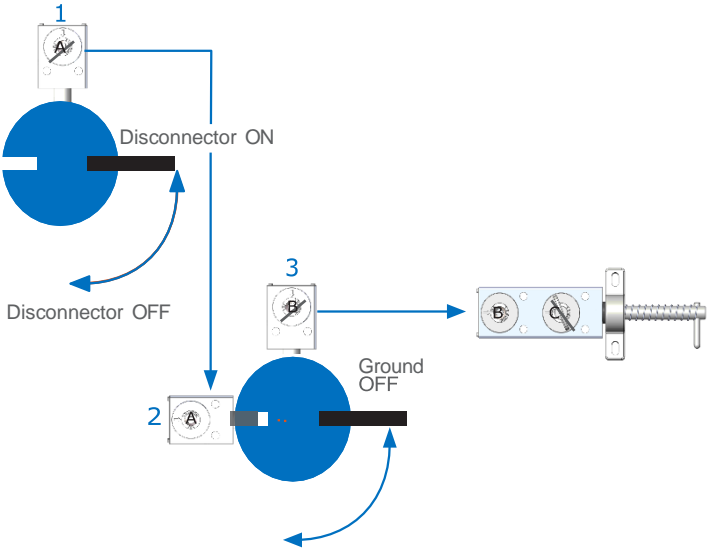
Key A is trapped in the disconnecter SD bolt lock (1) while the process is on.

To enter the hazardous area, the disconnecter is turned to the off position and key A is turned and released, locking the disconnecter in the disengaged position.

Key A is then taken to the grounding switch. Key A is inserted in the second SD lock (2) which retracts the bolt enabling the cammed switch lever to be rotated to engage the ground. Once rotated, the recess in the cam aligns with the next SD lock (3) with key B trapped in its lock.

Key B can now be removed from SD lock (3), which now locks the lever in place ensuring that the ground connection cannot be broken.

The system is now disconnected and grounded, key B can be taken to operate the access interlock on the door of the hazardous area to gain access into it.

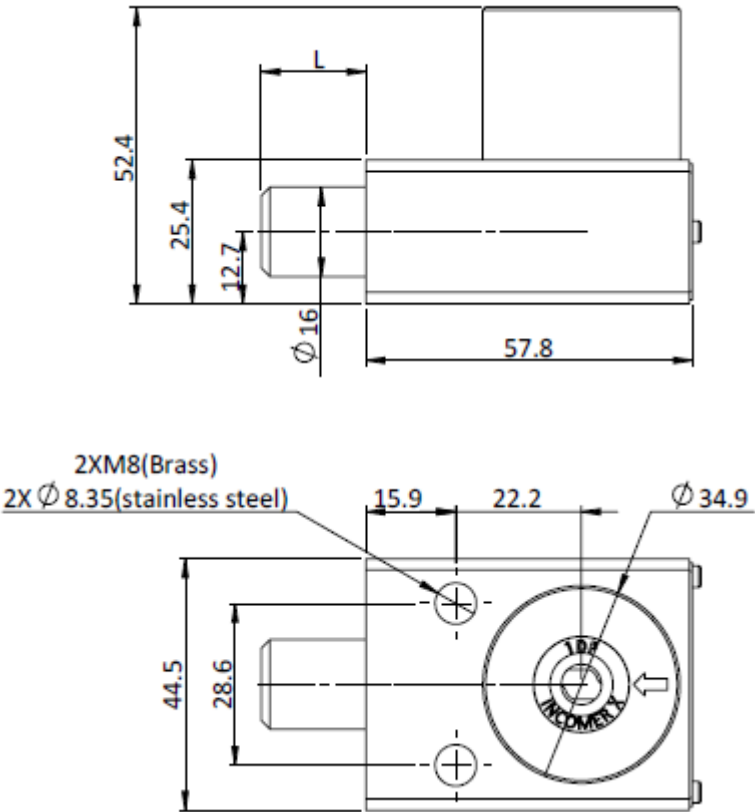


DRAWING

Dimensions: in mm

Note: For safe mounting, use security screws

SD, Key free bolt extend



Length "L" Retracted of bolt	Bolt travel	Length "L" Extended of bolt
0.0mm(Flush)	18.3mm	18.3mm
6.35mm(1/4")	18.3mm	24.6mm
12.7mm(1/2")	18.3mm	31.0mm
19.05mm(3/4")	18.3mm	37.4mm
25.4mm(1")	18.3mm	43.7mm


ORDER INFORMATION

	Component type		1	2
Part number	SD	-		
Example	SD	-	S	0

1	Material	S = Stainless steel B = Brass
2	Length "L" Retracted of bolt	0 / 6.4 / 12.7 / 19.1 / 25.4

Special construction available upon enquiry

ACCESSORIES

	Product	Part number
	Production cover	CAM12490(to be consulted to Armadillo)

CONTACT INFORMATION

WWW.ARMA-SAFETY.COM

Email: Sales@arma-safety.com

Phone: 0086(0)1531 680 2637

Address: No.2258 CaoAn Road JiaDing district Shanghai China